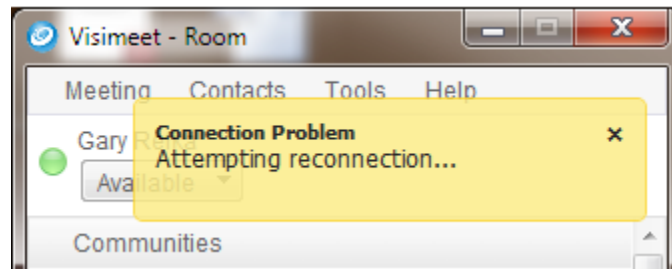


## Why does my system say that it is attempting to reconnect?

---

This is an indication that you have lost your network connection to the Visimeet service. This is generally a network related problem where the network is dropping out or is being overloaded and is unable to support the Visimeet connection.



There are a couple of things that can be attempted to correct the problem –

- If you are using a WIFI connection, try using a wired connection or mover closer to the WIFI access point.
- If you are using wireless cell service, look for a better performing location.
- Try changing the Method on the Visimeet Login screen to RTSP from Automatic.

