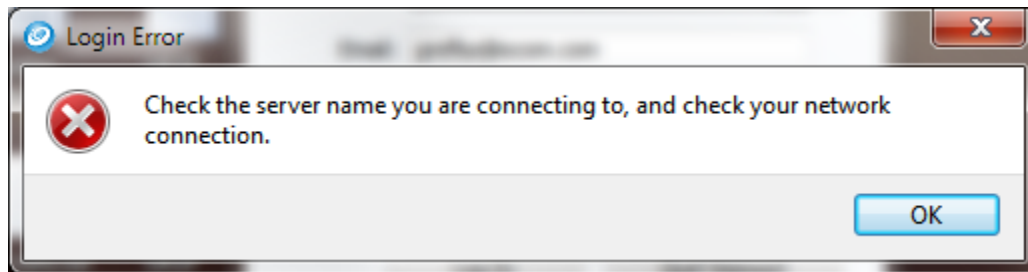


Why do I get an unable to connect error when trying to use Visimeet?

The error below will appear if the network which you are using cannot support Visimeet. This will be seen if the network is unavailable or has security settings that will block the Visimeet traffic.



If you suspect that network security is blocking the traffic and wish to request that the proper access be granted, IOCOM support will be happy to work with your IT specialists. Please refer them to support@iocom.com to request the proper network configuration for access.